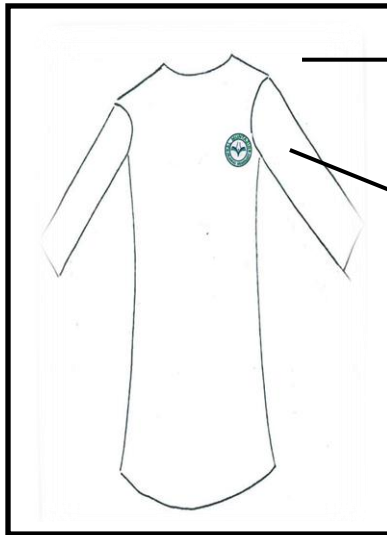


# Uniform Pattern For Form 1 – 4 Girls

## Regular Uniform:

Dark Grey Long Sleeved Loose Fitting Top (length below the knee)/ Long two pleated grey trousers.



Long sleeves top

School logo to be stitched on the pocket



Front plain and back elastic no zippers

Two Pleats

School Logo



LOGO available from the school. LOGO to be purchased according to the house colour allocated to the child



Plain white scarf to be worn with both the uniforms. LACED OR 2 PIECE SCARVES NOT ALLOWED.



Black leather shoes to be worn with the grey uniform.



Plain white socks to be worn with both the uniforms (ankle socks not allowed)

## P.E. Uniform

- White Scarf (Long enough to cover the chest).
- Colored Top based on the House allocated – Not transparent, knee length with 6" slit on the sides.
- White trousers – Loose, no slits, no hipsters or bells.
- White trainers and white socks.



White trainers to be worn with the PE uniform.